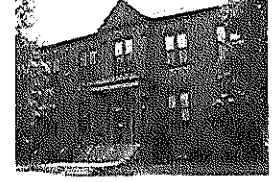




**La Academia: The Partnership Charter School
(LAPCS)**
Special Education Policies and Procedures



**-DISPROPORTIONATE REPRESENTATION AS RESULT OF
INAPPROPRIATE IDENTIFICATION -**

In order to prevent inappropriate identification of students receiving special education by race/ethnicity, as well as by disability category, the following procedures will take place:

- In response to reports of students who are displaying academic or behavioral abnormalities in the general education setting, the following data will be submitted and reviewed:
 - Student Grades
 - Achievement Assessments (WIDA, etc.)
 - PSSA/Keystone Scores & Benchmark Assessments
 - Teacher Documentation:
 - ABC charts (Antecedent, Behavior, Consequence) and anecdotal notes
 - Documentation of response to interventions
 - Student Records:
 - Home language survey
 - Academic background and school history
 - Incident Reports
 - Socioeconomic information
 - Residence history
 - Parent/Guardian Interview and Student Interview
- If the data shows major discrepancies, the LEA will implement the following procedures to eliminate the potential for bias and inappropriate identification:
 - The LEA will review all data submitted in accordance with Catherine Collier's 7 factors to determining whether discrepancies are due to language learning or disabilities (2010).
 - The LEA will contact the local agency (IU13) to perform classroom observations and administer evaluation assessments if applicable.

References:

Catherine Collier's 7 factors to determining whether discrepancies are due to language learning or disabilities (2010)